

The Learning Connexion

Oriel Hoskin Scholarship

0800 278 769 | tlc.ac.nz



THE LEARNING CONNEXION
School of Creativity and Art

About the Oriel Hoskin Scholarship

Oriel Hoskin was one of The Learning Connexion's trail blazers, particularly during the challenging times after the school moved to Erskine College in Island Bay. Oriel was a highly versatile artist and developed a big following for her classes in fabric printing. She had marvellous teaching skills and drew out the best of her students' creativity. Her classes combined flair, adventure and professionalism.

She loved The Learning Connexion environment and was looking to extend her involvement when she suddenly became ill during 1999. On discovering that she had only a short time to live she responded with typical serenity and energy, planning her funeral and treating the experience of dying as another adventure. The Learning Connexion Oriel Hoskin Scholarship is a tribute to a friend, colleague and teacher who had the courage and wisdom to live creatively.

What does the scholarship cover?

The Oriel Hoskin Scholarship is awarded to cover part or full tuition fees or art supplies credit annually.

Applicants will ideally be:

- A person who shows commitment and potential
- A prospective student beginning their studies, or a Certificate (level 4) student wishing to progress to the next qualification
- A person who has demonstrated, or can demonstrate in an application, a clear idea of how their work expresses the concept of **'Life in my world'**

Entry requirements

- Successful applicants must be eligible for enrolment - see admission requirements for more details
- Applicants must be 16 years or older at the time of enrolment
- Successful applicants must be able to take up enrolment at any start time in the year following the granting of the scholarship
- Scholarships are open to New Zealand citizens or permanent residents

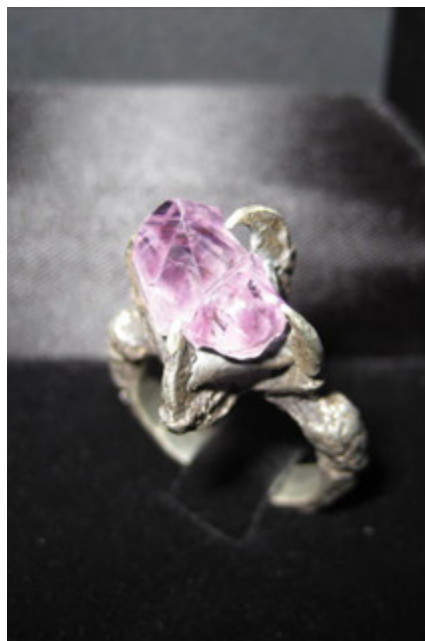
How to apply

Fill out and submit the following in our online application form.

- Read the rules and conditions outlined in this document
- Applicants are to submit three recent works, in any media, about how your work deals with exploration of identity through the theme **'Life in my world'**. **Submitted works may be any style or medium and should highlight your insight, originality and commitment. Technical skill is a factor although it is more important that the work communicates boldly*
- Answer the following questions in relation to each image submitted:
 - » How does this work relate to your application statement?
 - » What concepts were explored in the making of this work, i.e. what influenced it?
 - » What processes were used to create the work?
 - » If you were to revisit this work, what changes would you make and why?

- Submit a statement of 200 words or less outlining how your work relates to the given theme
- Our scholarship forms have been expanded to allow applicants to provide additional evidence in the form of three supporting images per submission, which may include (*but are not limited to*); developmental drawings or sketches, trial/sample works that have relevance to the finished piece, or images showing stages of progression through the work. While these images are not required, they do add merit to the submission and will be considered as part of your application

Please note: As the application is through an online form, we recommend applicants prepare the information above in a text document prior to submission in case of any complications. Images of your work must be available digitally, each sized 1MB or less.



Rules and Conditions

The Oriel Hoskin Scholarship can be used for the following programmes:

The New Zealand Certificate in Creativity (level 4)

The New Zealand Diploma in Creativity (level 5)

- Submissions must be your own original work
- By applying for the scholarship each applicant guarantees that their entry does not infringe upon or violate the rights of any third party
- It is permissible to submit material that has been used in other contexts (such as for an exam or exhibition)
- The Learning Connexion Ltd (hereinafter TLC) may make use of the work in submissions for promotional purposes without compensation to the artist and without any requirement to seek approval for such use
- Students who are eligible for the government's 'Fees Free' initiative will have the 'Fees Free' amount that they are eligible to receive deducted from their total fees owed. Where this still leaves an outstanding amount of fees owing, the student may then use any scholarship granted to cover the remaining fees. Any remaining scholarship will be forfeited
- Scholarships must be taken up during the year following their successful granting
- To be eligible, submissions must be received by the due date. Late submissions will not be accepted
- Submissions will be assessed by TLC staff and awards will be made at the discretion of the managing director whose decision will be final
- Scholarships are not redeemable for cash
- TLC reserves the right to provide more or fewer scholarships than the number advertised
- Scholarships may be taken up either by enrolling for distance delivery or by studying on-site at our Taita Campus
- Successful applicants will be advised by email by the end of the year in which they apply

If you require any assistance with the application, please contact our Admissions team - 0800 278 769 or email admissions@tlc.ac.nz